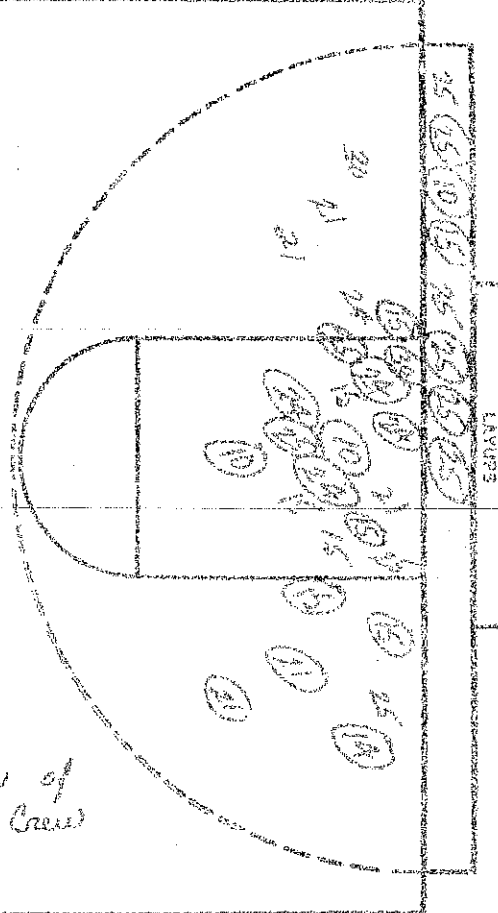
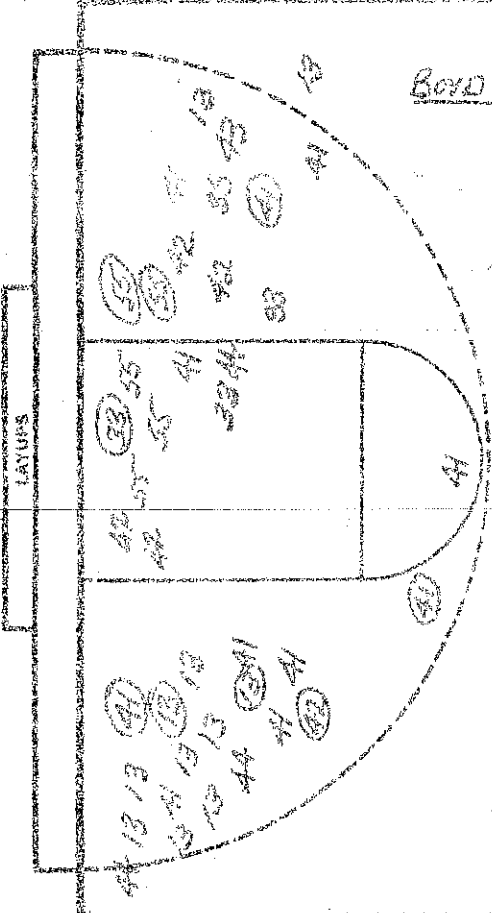


turnovers

55	25
33	10
54	10
24	21
5	25
8	10
7	15
30	
44	
10	
11	
12	
13	
14	
15	
16	
17	
18	

Boyd Co.

BUTLER



Contributors of EKL State Crew

NO.	Boyd Co.	FG-FGA	FT-FTA	REB	P	TP	A
13	MURRY BOGGS	2-11	2-4	1	0	6	1
21	GABRIEL MEEK	3-11	0-0	0	0	6	2
55	MELANIE MAY	2-5	1-1	4	3	5	0
42	KIM SCOTT	1-6	0-0	7	0	2	0
33	ANGIE MEENACH	1-3	0-1	4	2	2	1
54	CARLA JEWITT	0-0	0-1	1	1	0	0
44	TRACY RIGGS	0-3	0-0	2	1	0	0
48	CATRY NEWTON	0-1	0-0	0	0	0	0
		-	-				
		-	-				
		-	-				
		-	-				
		-	-				
		-	-				
		-	-				
		-	-				
		-	-				
		-	-				
		-	-				
		-	-				
	TOTALS	9-40	5-7	20	7	21	4

NO.	BUTLER	FG-FGA	FT-FTA	REB	P	TP	A
10	STEPHANIE EDWARDS	3-3	0-0	2	1	6	4
25	ROSALIND SMITH	6-10	0-2	3	1	12	4
24	JANET McNEW	4-5	3-3	1	2	11	0
14	ROSIN RHODES	1-1	1-2	2	2	3	0
21	DANE JOHNSON	2-5	0-0	3	1	4	2
30	BARBARA EPPERSON	1-2	0-1	3	1	2	2
15	PATRYIA JOHNSON	5-8	0-0	10	1	10	0
13	MARY HORNBACK	0-0	0-0	1	0	0	0
		-	-				
		-	-				
		-	-				
		-	-				
		-	-				
		-	-				
		-	-				
		-	-				
		-	-				
		-	-				
		-	-				
	TOTALS	22-34	4-8	25	9	48	12

PERCENTS 5 YEAR REBOUNDS (NOT IN TOTAL)

PERCENTS 3 TEAM REBOUNDS (NOT IN TOTAL)

Boyd Co 15-6=21

BUTLER 25-25=48

SCORE BY HALF

PERCENTAGE

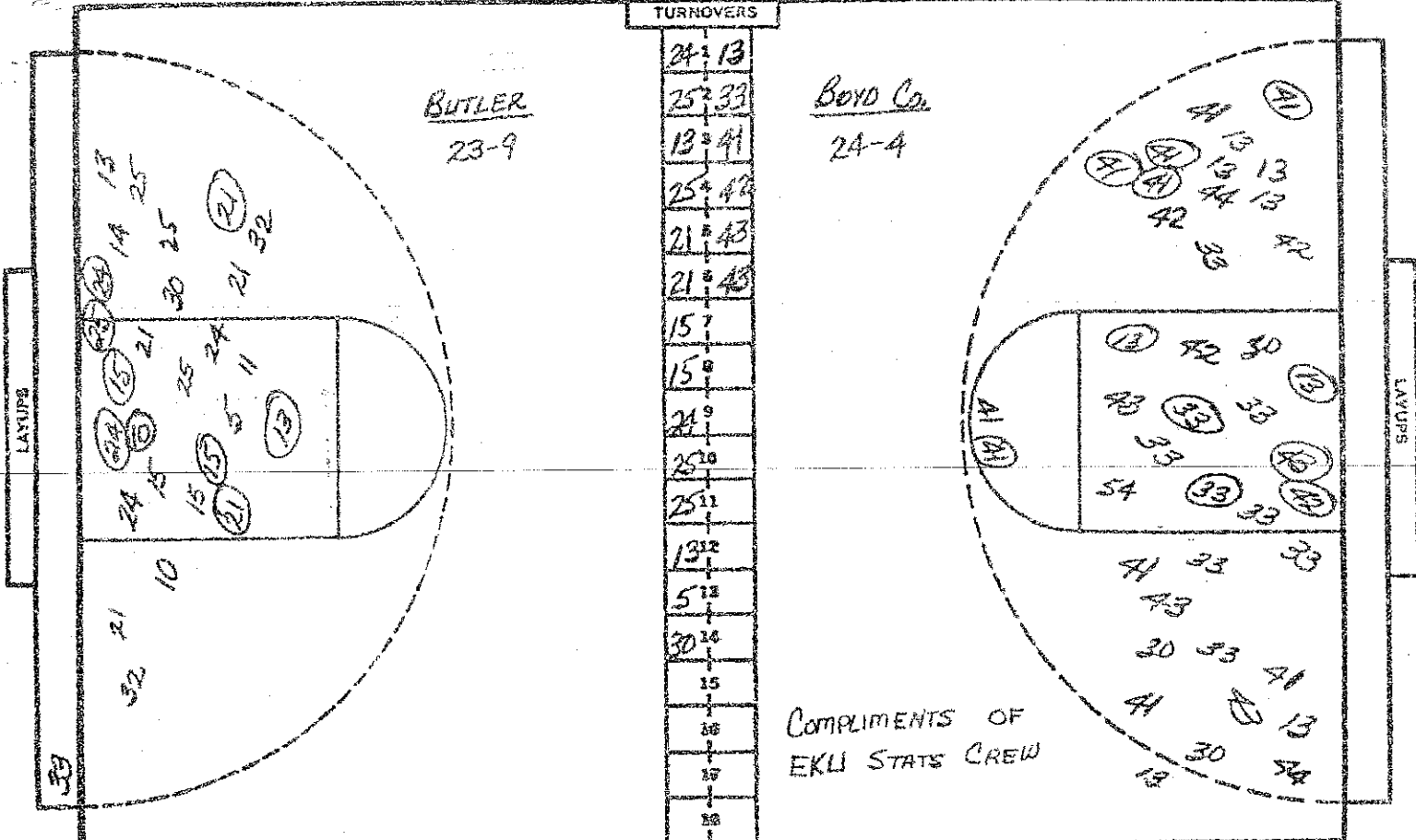
ATTENDANCE

TURNOVERS

24-13
25-33
13-41
25-42
21-43
21-43
15-7
15-8
21-9
25-10
25-11
13-12
5-12
30-14
15
16
17
18

BUTLER  
23-9

BOYO Co.  
24-4



COMPLIMENTS OF  
EKLI STATS CREW

NO.	BUTLER	FG-FGA	FT-FTA	REB	P	TP	A
10	STEPHANIE EDWARDS	4-5	0-0	2	2	8	4
25	ROSALIND SMITH	7-14	0-2	8	1	14	6
24	JANET McNEW	6-9	5-5	5	3	17	1
14	ROBIN RHODES	1-2	1-2	2	2	3	0
21	DIANE JOHNSON	4-10	1-2	7	2	9	2
30	BARBARA EPPERSON	1-3	0-1	7	1	2	2
15	PATREIA JOHNSON	7-12	2-2	17	1	16	0
13	MARY HORNBACK	1-2	0-0	1	0	2	0
32	DEIDRA HICKMAN	0-2	1-2	1	0	1	0
22	RHONDA PANTER	0-0	0-0	0	0	0	0
5	BETH MUENINGHOFF	0-1	0-0	2	0	0	0
11	ROBIN THOMPSON	0-1	0-0	1	0	0	0
TOTALS		31-61	10-16	55	12	72	15

NO.	BOYO Co	FG-FGA	FT-FTA	REB	P	TP	A
13	MINDY BOGGS	4-19	2-5	2	2	10	2
41	GARNETT MEEK	8-21	0-0	0	0	16	3
55	MELANIE MAY	2-5	1-1	5	5	5	0
42	KIM SCOTT	2-10	0-0	10	0	4	0
33	ANGIE MEENACH	3-12	0-1	12	5	6	3
54	CARLA JEWITT	0-1	0-1	1	1	0	0
44	TRACY RIEGS	0-5	0-0	2	1	0	0
43	CATHY NEWTON	1-5	0-0	1	0	2	0
53	SUZANNE VANHOSE	0-0	0-0	1	0	0	0
30	DANA YOUNG	0-3	0-0	0	0	0	0
35	JAYNA CLARK	0-0	0-0	0	0	0	0
51	BINGER HARRISON	0-0	0-0	0	0	0	0
TOTALS		20-81	3-8	34	14	43	7

PERCENTS 50.8 62.5 7 TEAM REBOUNDS (NOT IN TOTAL)

PERCENTS 24.7 37.5 8 TEAM REBOUNDS (NOT IN TOTAL)

SCORE BY HALVER BUTLER: 25-23-10-14 = 72

BOYO Co. 15-6-14-8 = 43

OFFICIALS: SHELBY WINDREY - CAMPBELLVILLE; SHARLEY WILFRED - MURRAY

ATTENDANCE: 4700

4th SESSION